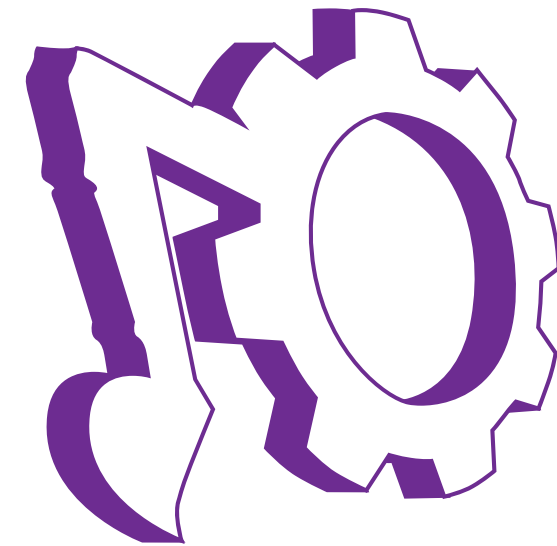


ALHAIDARIYA

HEAVY EQUIPMENT HIRING

Where Quality makes the Difference...

P.O. Box: 5723-Manama - Kingdom of Bahrain, Tel.: 17 62 0551, Fax: 17 62 0833
Instagram: @ALHAIDARIYA, E.mail: haidarya@batelco.com.bh - info@alhaidariya.com



ALHAIDARIYA
HEAVY EQUIPMENT HIRING

YOU HAVE THE PROJECT... WE HAVE THE EQUIPMENT



FOREWORD

We take this opportunity for thanking all our customers for making Al Haidariya Heavy Equipment Hiring the most sought after firm in Equipment Hiring. Since its date of established in December 2003, our vision had been to be recognized as the largest qualified supplier of reliable construction equipment in the region. We strongly believe that we have shown justice to our vision.

Providing superior quality services and with innovative solutions, Al Haidariya has been the first choice of the construction industry in the Kingdom. We underline the fact that our Pride rest on Excellence and we are committed to be respected and valued as a supplier of heavy equipment recognized worldwide.

We are committed to the philosophy of Total Quality Management and Business Excellence. Thus, our existing processes represent an ongoing effort by the management and employees

to continuously reduce variability in all processes and deliver highest quality services in the most cost efficient way.

Al Haidariya Heavy Equipment Hiring could not be rated next to any of the competitors in the region. Our growth over the year is the evidence for this. The recurring orders are the testimony for the quality of the services we offer. Our safety team's efforts has made our operators and drivers the most safety oriented in the industry.

The management always offers great support to the staff, as we believe that the company's employees are our greatest wealth.

Sayed Hashem Al Durazi

General Manager

09 March 2016

Manama, Kingdom of Bahrain.



AL-HAIDARIYA VISION

To be recognized as the largest qualified supplier of reliable construction equipment in the region.

AL-HAIDARIYA MISSION

To provide reliable construction equipment along with the best possible service to our clients, in order to achieve the most desirable results and satisfaction.



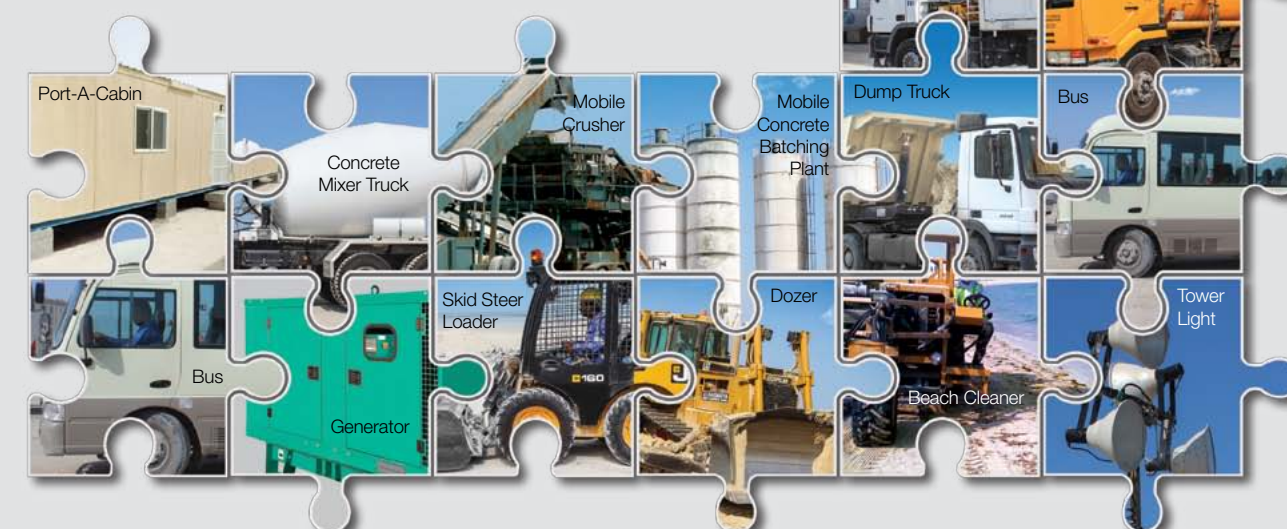
OUR EQUIPMENT

Our equipment is of the best quality available in the industry. All equipments are recent, and is continually updated and improved. No matter what your need is, we will be able to help you.

EQUIPMENT FOR HIRING

Al HAIDARIYA is your ultimate source in the Kingdom of Bahrain for heavy machines for all your industrial plant needs. We have the largest quantity and selection of industrial plant hire.

- Manlift / Access Platform • Truck Mounted Cranes •
- Cranes • Water Tankers • Dump Trucks • Telescopic forklifts/ Telehandler • Motor Graders • Vibratory Soil Compactor/ Rollers • Forklifts • Rock breakers • Backhoes • Dozers •
- Excavators • Skid Steer Loaders • Wheel Loaders • Beach Cleaner / Sand Cleaner • Tower light • Mobile Concrete Batching Plant • Concrete Mixer Trucks • Mobile Sand Washing Plant • Mobile Screen • Mobile Concrete Pump •
- Mobile Crusher • Crawler Cranes • Road Sweepers • Port-A-Cabins • Generators • Bus • Lowbed • Flatbed



SERVICES & MAINTENANCE

All our equipment is fully maintained and carries all the required certification. We have a team of qualified maintenance personnel from engineers to operators and they have at least five (5) years experience in the field.

Our team is on call 24 hours a day, 7 days a week, 365 days a year! One call will bring our team to your site.

The maintenance and overhaul of the equipment is done on regular basis and equipment is under operating guarantee while hiring.



CUSTOMER SERVICE

Al Haidariya customer service is your quickest contact, even when you wish to arrange a face to face meeting.

- For competent advice
- For placing orders and obtaining delivery information
- For information about the availability of individual Al Haidariya equipment
- For making suggestions and complaints.



SAFETY & QUALITY

Safety is one of our most preoccupying issues, when offering equipment for hire; we make sure that our equipment fulfils the required safety measures.

A good safety performance is one of the principal valid Business objectives of the Company. Our Company is ISO 9001 - 2008, ISO 14001 - 2004 and OHSAS 18001 - 2007 certified and committed to quality management.





WHEEL LOADER

A wheel loader is usually referred to as a front end loader or a shovel. It is one of the most popular machines in construction industry.

It could carry out multiple tasks at a very low rate. Material Handling, Loading, Load and carry etc are some of the applications of the machine.

Al Haidariya Heavy Equipment Hiring has a fleet consisting of more than 25 wheel loaders of several of capacities. The models are outlined in the next page.

Wheel Loader



Model	DL 200
Operating Weight	11,000 kg
Bucket Capacity	2.0m ³



Model	DL 250 V
Operating Weight	14,000 kg
Bucket Capacity	2.5m ³



Model	DL 300 A
Operating Weight	17,300 kg
Bucket Capacity	3.0m ³



Model	DL 400 V
Operating Weight	22,610 kg
Bucket Capacity	4.0m ³



EXCAVATOR

Excavators are a group of construction machinery that are generally used for digging and excavating soil. It has an ability to turn 360° without being moved from its wheel (chain) position. It normally comes with a bucket attachment. However, there are a number of attachments that could be fixed with an excavator. Rock Breakers, Grapples, Augers etc are some of the attachments that are generally used. With these attachments, the machine could be used for digging trenches, holes, foundations, material handling, demolition works, drilling, Mining, dredging etc. The excavators come with a chain or a wheel, depending upon the application. Al Haidariya heavy Equipment Hiring has a fleet of more than 55 excavators, with all the said attachments and of several capacities.

Attachments



Grapple



Rock Breaker

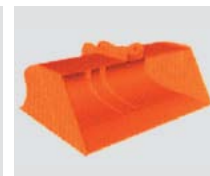


Compactor



Auger / De-watering drill

Buckets


Standard bucket
0.92-1.20 M³

Slope Finishing bucket
0.98-1.55 M³

Small bucket
0.51-0.67 M³

Long Boom Excavator



22.5 Ton

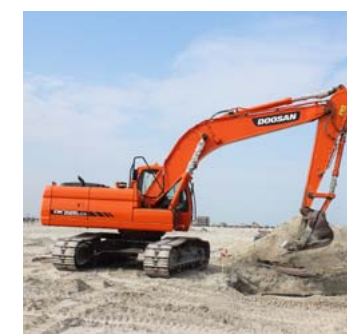


30 Ton

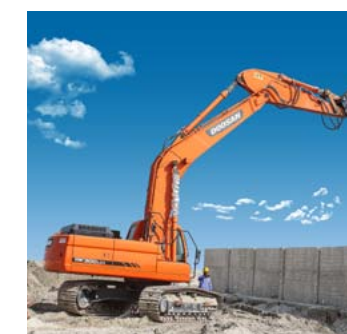


50 Ton

Standard Boom Excavator



22.5 Ton



30 Ton



50 Ton

Wheel Excavator



5.5 Ton (Wheel)



18 Ton (Wheel)

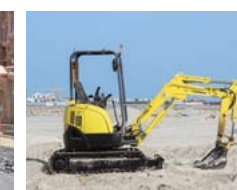
Mini Excavator



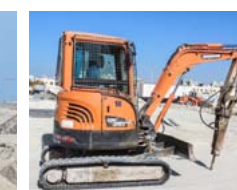
0.8 Ton



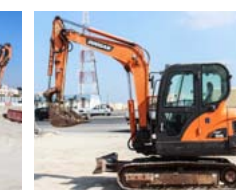
1.4 Ton



2 Ton



3.5 Ton



5.5 Ton



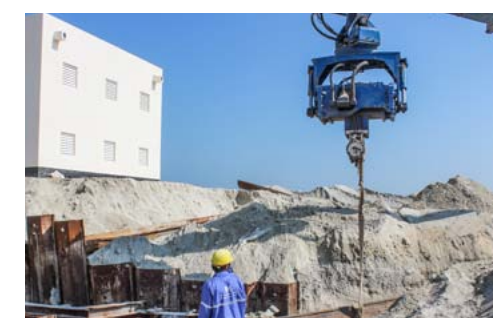
DE-WATERING SYSTEM

As part of the total solutions offered by Al Haidariya, we undertake supplying of machineries for dewatering works. One could find all the equipments required for dewatering works in our fleet, whether it is an excavator with an auger or drill attachment for inserting well point system, excavators for deep well dewatering, all the accessories for well point dewatering system, pumps for pumping the water, water tankers for dewatering and so on.



TRENCH SHORING SYSTEM

In addition to the dewatering works, Al Haidariya have successfully undertaken the equipment supplies for trench shoring works. Al Haidariya's excavators could be attached with a vibro-hammer, which would hold the trench sheets/sheet piles and would insert them into the soil. We supply the customers with the excavators, vibro-hammers, trench sheets and sheet piles. Furthermore, our experienced technicians would be happy to assist our customers in carrying out the trench shoring works.





TELESCOPIC HANDLER

A Telescopic Handler is often referred to as a Telehandler, extendable forklift or load all. As the later name indicates, this machines would “Load All” depending on the attachment fixed to it. It could be attached with a Fork, as in a conventional forklift, a bucket as in a wheel loader, a man-bucket as in a man lift, winches or jibs as in a crane, grapples as in a excavators. The advantage is that due to the special design, it would allow one to reach horizontal distances in confined spaces. One can find this equipment with a variety of attachments in Al Haidariya's fleet.



Crane



Bucket



Forks



Road Sweeper

BACKHOE

If one is looking for an excavator and a loader together, a Backhoe comes to your rescue. A backhoe is a machine with a dual attachment. It has an excavating arm which could be fixed with a bucket or a jack-hammer, depending on the characteristic of the soil to be excavated and a loading bucket as seen in a wheel loader. This machine is colloquially termed as “JCB”, as a privilege given to the most common Backhoe in the market. In Al Haidariya's fleet you could come across a numbers of such machines and it is one of the most hired machinery.



With Bucket



With Breaker



GRADER

A Motor Grader or a Road Grader is a piece of Heavy Machinery widely used in Road works. It is used to prepare a smooth, wide and flat surface. The application of this machine generally comes before the laying of asphalt. It is also used for spreading earth filling material and also for earth moving. They can also remove debris.

The levels provided by a Grader would be so perfect that it the surface could be compacted and then used for asphaltting or for masonry paving.

Specification :

Model	Weight	Power
12H	29,500 lbs.	135 hp
140H	29,850 lbs.	150 hp
14H	40,650 lbs.	180 hp



ROLLER/COMPACTOR

A Compactor or a Roller is used to compact loose materials. It is used in loose foundations which are filled with soil, gravel, asphalt and such other material.

This piece of heavy machinery would help one to get a compacted, rigid surface so that the soil is not loose. Al Haidariya's fleet consists of Rollers of a variety of specifications. We have rollers ranging from Hand Operated ones to the Double Drum Rollers.





MOBILE CRANES

A piece of Heavy Lifting Equipment that is cable-controlled with a telescopic is termed as a crane. Al Haidariya's fleet boasts of having cranes ranging from 20Tonnes to 400Tonnes. We have different types of cranes, such as Mobile Truck Mounted Cranes, Rough Terrain Cranes, All Terrain cranes and Crawler Cranes.

Sizes :

Mobile : 20 Ton, 30 Ton, 50 Ton, 70 Ton, 110 Ton, 160 Ton, 220 Ton, 400 Ton

Crawler : 50 Ton, 80 Ton, 150 Ton



220 Ton



160 Ton



110 Ton



Crawler Crane

FORKLIFTS

A lift truck or a forklift is an equipment that is used to carry heavy loads from one place to another. They are also used to load and unload heavy loads to and from transporting vehicles. Different types of forklifts are available in our fleet. Fuel operated and battery operated forklifts could be supplied depending on the field of operation. The operators of a forklift have to be well trained and vigilant as the visibility in front would reduce once it carries load. Al Haidariya's operators are well trained and are the best in the industry.

Types: Electrical, Diesel.

Capacity :

• 3 Ton • 5 Ton • 7 Ton • 10 Ton • 18 Ton





LOW BED

Low beds are used to transport heavy equipment through highways and roads. In Al Haidariya one can find a variety of low beds with different operational abilities and load carrying capacities. A low bed is usually attached to a tractor head. The type of tractor head that has to be attached would depend on the load that the low bed would carry.



FLAT BED

A flat bed is very similar to a low bed, except that its deck is like a platform, a bit higher from the ground level. It is used to haul large loads especially in containers. A wide range of flat beds are also available in Al Haidariya's fleet.

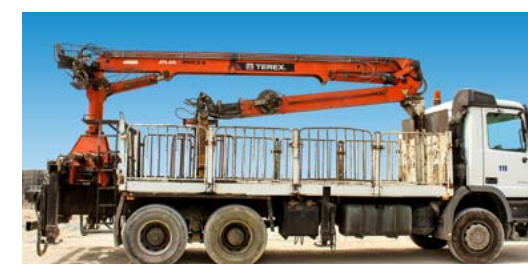


TRUCK MOUNTED CRANE

A truck mounted crane is colloquially terms as a HIAB, owing the name to the most popular manufacturer of such machines. It is a self-loading and unloading truck, which consist of a rotating cantilevered boom attached to the trucks body. These machines are used to load and transport comparatively smaller loads ranging from 3Tonnes to 15Tonnes.

Capacity :

3 Tons, 5 Tons, 7 Tons, 10 Tons & 15 Tons





DUMP TRUCK

A Dump Truck or a Tipper Truck is a truck with a dump body which is hydraulically operated. They are used to transport earth filling materials such as sand, aggregates, rock, and other materials such as asphalt. Al Haidariya's fleets consists of dump trucks of capacities from 2m³ to 20m³.



TANKERS

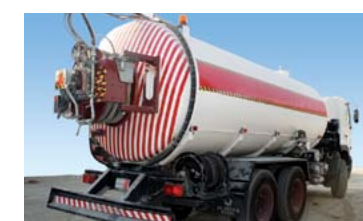
Water tankers are one of the most sought type of trucks on the island. Al Haidariya's fleet boats of having water tankers that could transport **Sweet (Potable) Water, Non-Drinking water** and **Agricultural water**. Al Haidariya's services are often lauded during the rainy seasons of the Island. Our team with their most modern **Vacuum tankers** have worked efficiently in dewatering the flooded areas of various parts of the Kingdom. We also have tankers that transport TSE water and waste water. Jetting Tankers are also available in the fleet.



Water Tanker



Fuel Tanker



Jetting Tanker



Vacuum / Sewage Tanker



AERIAL WORK PLATFORMS (MANLIFT AND SCISSOR LIFT)

Aerial Work Platforms are commonly known as Man-lifts. They are designed to provide temporary access elevate workers and tools to a required height so as to enable safe working at height. Al Haidariya's fleet has two types of AWP's. Articulated Boom Lifts and Scissor Lifts.

Scissor Lifts:

Scissor Lifts are designed to lift workers and tools to a particular height, directly overhead. They lift on a vertical plane. These machines could be used to carry out installation and maintenance works inside warehouses, for accessing heights outside the high rise buildings and so on. The safety and speed in setting up gives a clear advantage for these machines over ladders and or scaffoldings. A Scissor Lift has four wheels and outriggers that plants the machine to the

ground. Therefore, it does not move, unless you want it to do so. These make the machine extra-secure.

Articulated Boom Lifts:

These machines are used to reaching heights that are not easily approached by a straight telescopic boom. The articulation joints on the boom would allow it to bend in any number of different directions, thereby enabling to access the area of work. It gives the same safety and security as a scissor lift. The mobility of the machine is also similar. However, an Articulated Boom lift can access areas that a scissor lift is incapable to access.

Sizes : 8 Meter to 41 Meter



Boom Type



Articulated



Diesel Scissor lift



Electrical Scissor lift



Vertical Masts lift



SKID STEER LOADER

A Skid Loader (Skid Steer Loader) is colloquially called a “Bobcat”, the name of the most popular brand. These machines are a four wheeled, with the wheels mechanically locked in synchronization on each side, and the left-side drive wheels can be driven independently of the right-side drive wheels.

The equipment got the name “skid steer” from its ability to drive in opposite directions. In place of the bucket, a number of attachments, such as breakers, sweepers, augers, forks and mowers could be used.

Specification :

Rated Operating Capacity	771 kg
Operating weight	2991 kg
Bucket Capacity	0.37 kg
Breakout Force (Bucket)	1710 kg
Breakout Force (Boom)	2270 kg



BULLDOZER

A Dozer is a piece of heavy equipment that moves on a track. A dozer, attached with a blade to push the soil, is usually termed as a “Bulldozer”.

The track is arranged in such a way that the equipment's weight is distributed over a large surface area. This enables the dozer to traverse over soil in a safe way.

A dozer could also be used to rip rock. For this purpose, a ripper attachment (a long claw like device) is provided on the back of the dozer. Different types of rippers such as single shank rippers and multi shank rippers are attached depending on the purpose of operation.



CAT D6 LGP



CAT D7



CAT D8



CAT D9



CAT D10



MOBILE READYMIX CONCRETE BATCHING PLANT

A concrete plant, also known as a batch plant or batching plant, is a device that combines various ingredients to form concrete. Some of these inputs include sand, water, aggregate (rocks, gravel, etc.), fly ash, potash, and cement. There are two types of concrete plants: ready mix plants and central mix plants. A concrete plant can have a variety of parts and accessories, including but not limited to: mixers (either tilt-up or horizontal or in some cases both), cement batchers, aggregate batchers, conveyors, radial stackers, aggregate bins, cement bins, heaters, chillers, cement silos, batch plant controls, and dust collectors (to minimize environmental pollution). The center of the concrete batching plant is the mixer.



Concrete Mixer Truck



Mobile Concrete Pump



Cement Bulker

MOBILE PLANTS



Mobile Power Screen



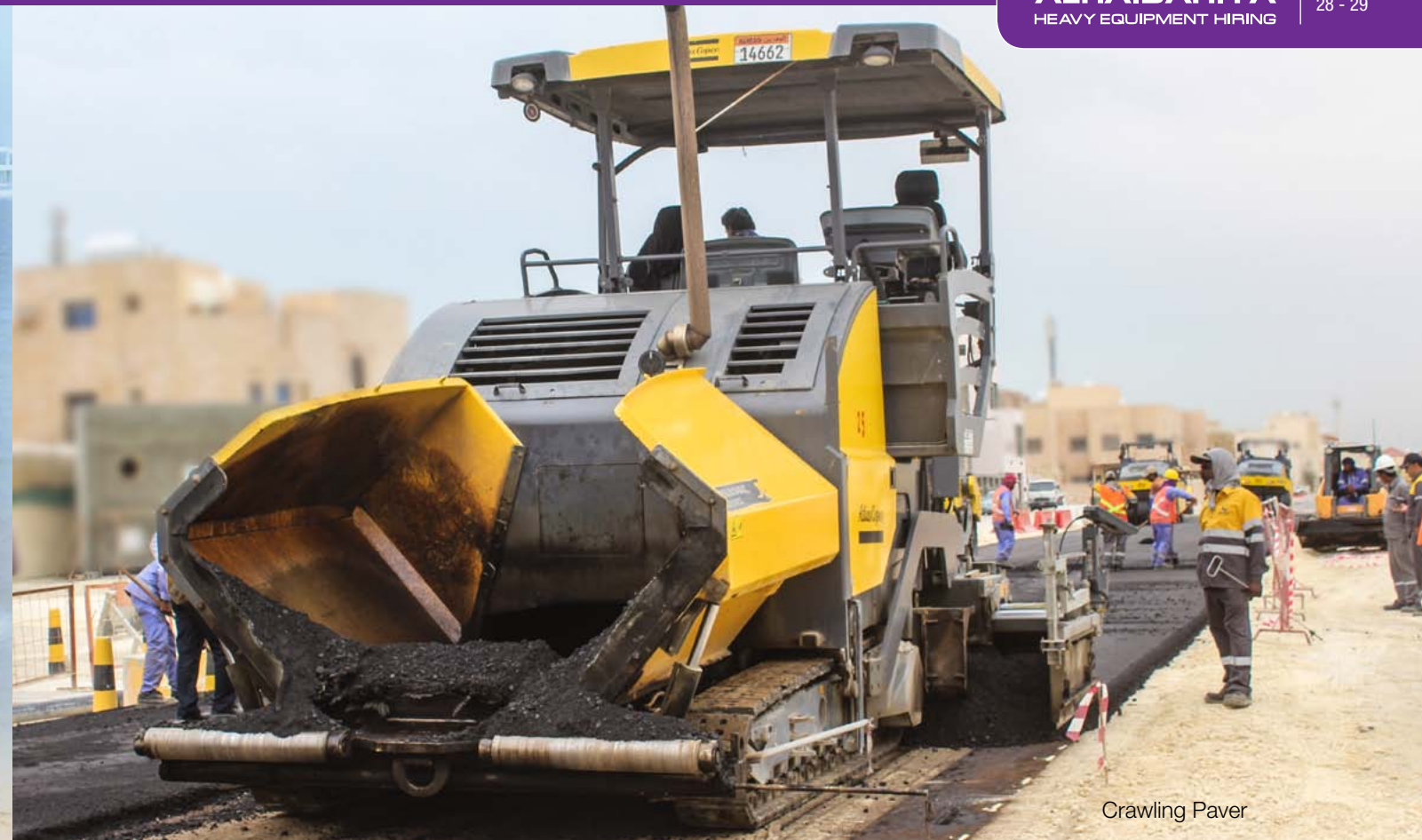
Mobile Crawler Crusher



Mobile Wheel Crusher



Mobile Sand Washing Plant



Crawling Paver

BEACH / SAND CLEANER

A beach cleaning machine is an equipment that is used to clean the beach sand from rubbish. It is a self-propelled piece of equipment that drags a raking or shifting device over the beach sand. The rubbish or any other foreign material is removed with this process. Any material that could be termed as foreign material for a beach including rocks, pebbles, wood, plastic and such other material could be cleaned by these machines. This is achieved by collecting the sand and then by raking or examining the foreign material.

Al Haidariya Heavy Equipment Hiring is one of the few equipment hiring companies in the region to possess such a machine. Our machines have the reputation of cleaning most of the private beaches on the island.



Before : A lot of construction trash



That trash line is almost gone



Seaweed and wet sand



And the pile grows



Construction trash-rocks-shells-glass and plastic



After : the beach is clean

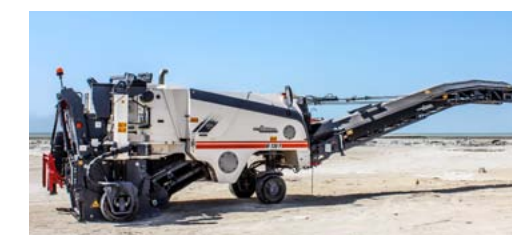
ASPHALT PAVER AND MILLING MACHINE



Wheel Paver



Crawler 2 M Milling



Wheel 1.3 M Milling



BUS, PICK UP & VAN



SPECIAL USE



Port-A-Cabins



Ambulance



Tower Light



Solar Signs



Road Sweepers



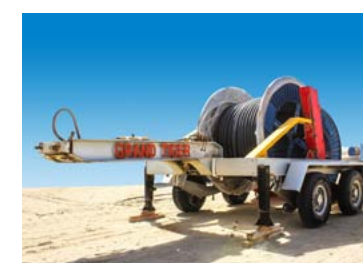
Solar VMS



Generator : 5 KVA – 2000 KVA



Diesel Pump



Cable Trailer



Cable Winch

This brochure details
our excellence in various
equipment categories
which are expanding
everyday.

The Company with the
largest fleet of Construction
equipment in the region.

